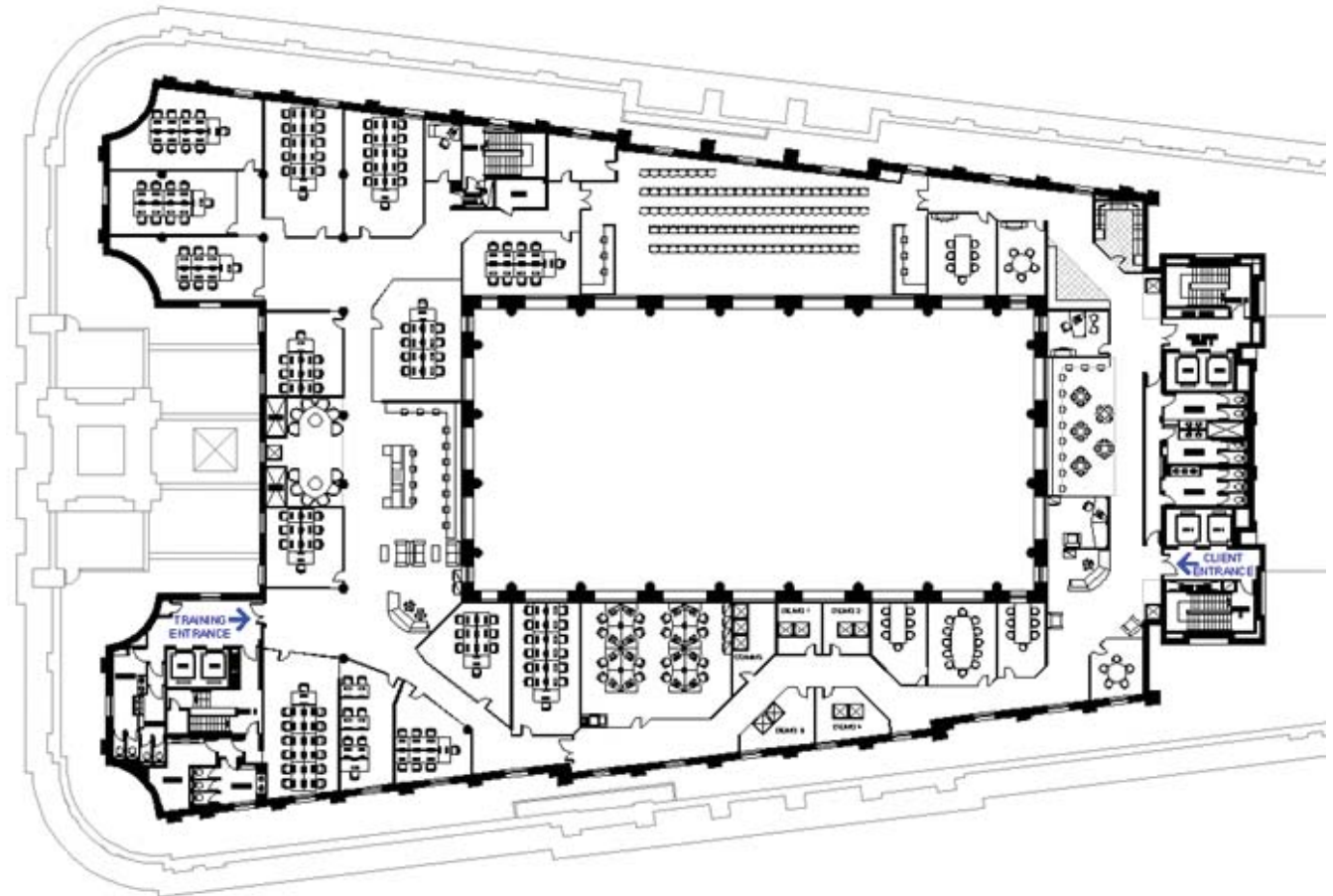


# Arrow ECS relocates to The Royal Exchange London



ARROW ENTERPRISE COMPUTING SOLUTIONS



**London Office**  
Fourth Floor  
The Royal Exchange  
London  
EC3V 3LN

Tel: 020 7786 3400  
Fax: 020 7786 3444

# How to find us - London Office



ARROW ENTERPRISE COMPUTING SOLUTIONS

Arrow ECS  
Fourth Floor  
The Royal Exchange  
London EC3V 3LN

T: +44 (0) 20 7786 3400  
F: +44 (0) 20 7786 3444  
info@arrowecs.co.uk  
www.arrowecs.co.uk

Training Centre Contact Numbers  
T: +44 (0) 870 251 1100  
F: +44 (0) 870 251 1111

## By Tube

The nearest tube station to Arrow ECS' London office is Bank. This is serviced by Central, Northern, Waterloo & City lines. Bank is also linked by an underground walkway to Monument tube station, which is serviced by Circle and District Lines. Please leave Bank tube station by exit 3. Arrow ECS is situated on the 4th floor of The Royal Exchange building, on the corner of Threadneedle Street and Cornhill.

## By Train

The nearest mainline station is Liverpool Street. From Liverpool Street station turn right down Bishopsgate for 200m. Then turn right again into Threadneedle Street. Continue to the next junction. Arrow ECS is situated on the 4th floor of The Royal Exchange building, on the corner of Threadneedle Street and Cornhill.

We are situated within easy reach of all London mainline railway stations. For further information about public transport in London visit the Transport for London website at [www.tfl.gov.uk](http://www.tfl.gov.uk) or phone London Travel Information on 0843 222 1234. Arrow ECS is situated on the 4th floor of The Royal Exchange building, on the corner of Threadneedle Street and Cornhill.

## By DLR

Bank is also on the Docklands Light Railway. Please leave Bank tube station by exit 3. Arrow ECS is situated on the 4th floor of The Royal Exchange building, on the corner of Threadneedle Street and Cornhill.

## By Bus

Bus services to Arrow ECS include 8, 11, 21, 23, 24, 25, 26, 43, 76, 133, 242, 288 and all stop near to our offices.

